



Bundaberg Christian College
Education with Wisdom



STUDENT UNIFORM POLICY

CONTENTS

INTRODUCTION HAIR, GROOMING & JEWELLERY	1
INTRODUCTION CONT... EXTRACURRICULAR UNIFORMS	2
PREP GIRLS & BOYS	3
YEARS 1 - 6 GIRLS FORMAL	4
YEARS 1 - 6 BOYS FORMAL	5
YEARS 1 - 6 GIRLS SPORTS	6
YEARS 1 - 6 BOYS SPORTS	7
YEARS 7 - 9 GIRLS FORMAL	8
YEARS 7 - 9 BOYS FORMAL	9
YEARS 10 - 12 GIRLS FORMAL	10
YEARS 10 - 12 BOYS FORMAL	11
YEARS 7 - 12 GIRLS SPORTS	12
YEARS 7 - 12 BOYS SPORTS	13
SPORTS, EXTRACURRICULAR & BAGS	14
SHOES	15
HAIR - BOYS	16
HAIR - GIRLS	17

EXPECTATIONS

INTRODUCTION

At Bundaberg Christian College, we believe the way students present themselves reflects respect for themselves, others, and the College community. The College uniform represents unity, identity, and belonging. It promotes safety, inclusiveness, and equality while upholding our high standards and fostering a positive learning environment focused on personal growth and academic excellence.

This handbook outlines the uniform and grooming requirements for all students from Prep to Year 12. The College, parents, carers, and students share responsibility for meeting these standards through consistency, support, and personal accountability.

In all we do, Bundaberg Christian College seeks to honour God through excellence in presentation, fostering community, and preparing students to confidently represent their College.

COLLEGE COLOURS

The official College colours are teal, navy blue, and white. These colours are incorporated across all uniform items to build a sense of unity and identity for students from Prep to Year 12.

SEASONAL GUIDELINES

To ensure comfort during colder months, students are permitted to wear designated winter uniform items with both formal and sports uniforms. These items must be official College pieces, as outlined in this handbook, to maintain a consistent presentation across the student body.

HATS

Students are to wear College hats at all times when in the sun including outdoor lessons and sporting activities.

HAIR & GROOMING

Students are to maintain neat, tidy hairstyles that are natural in colour and appropriate to the College's standards. Hair must be kept off the face and collar or tied back if it reaches this length. Extreme styles, shaved patterns, decorative adornments, wigs, hair extensions, and false eyelashes are not permitted. Male students must be clean-shaven, and sideburns are not to extend below the bottom of the ear.

JEWELLERY, MAKEUP AND NAILS

JEWELLERY

Students may wear only minimal, modest jewellery in keeping with College standards.

- Watches are permitted for all year levels.

Earrings. Measurements below refer to the diameter of the earring.

Girls:

Prep–Year 6: Girls may wear **one** plain pair of gold or silver sleepers (14mm maximum), pearl earrings, or studs (4mm maximum) in the earlobe.



Years 7–12: Girls may wear up to **two** pairs of plain gold or silver sleepers (14mm maximum), plain studs (4mm maximum) or pearl earrings (11mm maximum), in the earlobe.



Boys

Prep- Year 9: Boys may not wear earrings

Year 10 - 12: Boys may wear **one** plain gold or silver stud (4mm maximum) in the earlobe.



Not permitted for girls OR boys: Hoop earrings, rings, body piercings, or any other jewellery beyond what is listed, including coverings or clear piercings.

MAKEUP

In Years 7 to 12, light make-up, such as natural foundation, light mascara and clear lip gloss is allowed. Heavy noticeable makeup is not permitted. Fingernails must be kept clean, short, neat, and tidy, with only clear nail polish allowed. Fake lashes, fake nails, gel paints, and French tips are not permitted.

YEAR 12 JERSEY

Year 12 jerseys may be worn with the sports uniform only, or at the discretion of the Deputy Principal Middle & Senior School.

ACCESSORIES

Hair accessories must be plain, functional, and in College colours — teal, navy blue, and white with hair bands worn off the forehead. The BCC school bag is compulsory and available from the Main Administration Building. Middle and Senior School students are recommended to use the larger size.

EXPECTATIONS

EXTRACURRICULAR UNIFORMS

In addition to the daily College uniform, some programs require a specialist uniform to be worn for relevant events and activities.

Music

- Music vest (available for hire)
- Worn with College navy trousers, a long sleeve white button-up shirt, and black leather shoes

Agriculture – Hoof n Hook

- Long sleeve button-up shirt and an Akubra-style hat or Hoof n Hook cap

Equestrian

- Equestrian polo shirt
- Optional jacket available for purchase through Shawline

College Sports Program & Development Squad

- Lions Sports polo (to be worn with the College sports shorts)

UNIFORM GUIDELINES OUTSIDE OF COLLEGE HOURS

When students are on College grounds after school hours, the expectation for uniform and personal presentation remains as outlined in this policy. When students are in their College uniform, but off campus, they are seen as ambassadors for the College and it is an expectation for them to take pride in their appearance and actions to positively reflect College values.

FREE DRESS GUIDELINES

The following expectations regarding students' attire are to be observed:

- Students may wear conservative attire (t-shirts that have negative slogans or images will not be permitted)
- Shorts must be an acceptable length (mid-thigh length minimum)
- No bare midriffs, low necklines, singlets or strappy tops
- Enclosed footwear should be worn at all times

BCC SECOND HAND UNIFORM SHOP

By appointment only. Contact main reception via phone or email to book in.

For more information click the link to the [online store](#).



JUNIOR SCHOOL

Prep Girls / Boys



College wide brim hat for Junior School

College sports polo shirt



College navy blue sports shorts

College sports socks and black leather shoes

*Can be velcro or laces. No Mary Jane shoes for girls.



College sports polo shirt

College navy blue sports shorts

College sports socks and black leather shoes

*Can be velcro or laces.

OPTIONAL



College sports track pants



College sports jacket



College full zip or half zip fleece jumper



Optional navy blue tights for girls

JUNIOR SCHOOL

Years 1 - 6 Girls Formal Uniform



College wide brim hat for Junior School



College teal tartan dress

College white socks and black lace-up shoes



College formal shorts and shirt are also an option for girls



College formal pants and shirt are also an option for girls

OPTIONAL



College full zip or half zip fleece jumper



Optional navy blue tights for girls

JUNIOR SCHOOL

Years 1 - 6 Boys Formal Uniform



College wide brim hat for Junior School



College teal tartan shirt

College navy shorts

Navy socks and black lace-up shoes



College formal long pants are also an option for boys

OPTIONAL



College full zip or half zip fleece jumper

JUNIOR SCHOOL

Years 1 - 6 Girls Sports Uniform



College wide brim hat for Junior School



College sports polo shirt

College navy blue sports shorts

College sports socks and black leather lace-up shoes

OPTIONAL



College sports track pants



College sports jacket



College full zip or half zip fleece jumper



JUNIOR SCHOOL

Years 1 - 6 Boys Sports Uniform



College wide brim hat for Junior School



College sports polo shirt

College navy blue sports shorts

College sports socks and black leather lace-up shoes

OPTIONAL



College sports track pants



College sports jacket



College full zip or half zip fleece jumper



MIDDLE & SENIOR SCHOOL

Years 7 - 9 Girls Formal Uniform



College Middle and Senior School girls formal hat



College teal tartan tie for Terms 2 & 3



College white blouse

College teal tartan skirt

College white socks and black leather lace-up shoes

OPTIONAL



College formal pants and shirt are an option for girls



College formal shorts and shirt are an option for girls



College full zip jacket



Optional navy blue tights for girls

MIDDLE & SENIOR SCHOOL

Years 7 - 9 Boys Formal Uniform



College Middle and Senior School boys formal hat



College navy and teal tie for Terms 2 & 3



College white shirt

College navy shorts and black belt

College navy socks and black leather lace-up shoes



College formal long pants are also an option for boys

OPTIONAL



College full zip jacket

MIDDLE & SENIOR SCHOOL

Years 10 - 12 Girls Formal Uniform



College Middle and Senior School girls formal hat

College navy blazer for formal events and cold weather option



College teal tartan tie for Terms 2 & 3



College white blouse

College teal tartan skirt

College white socks and black leather lace-up shoes

OPTIONAL



College formal pants and shirt are an option for girls



College formal shorts and shirt are an option for girls



Optional navy blue tights

MIDDLE & SENIOR SCHOOL

Years 10 - 12 Boys Formal Uniform



College Middle and Senior School boys formal hat

College navy blazer for formal events and cold weather option



College navy & teal tie for Terms 2 & 3



College white shirt

College navy pants and black belt

College navy socks and black leather lace-up shoes

OPTIONAL



College formal shorts and shirt are an option for boys

MIDDLE & SENIOR SCHOOL

Years 7 - 12 Girls Sports Uniform



College wide brim hat for Middle and Senior School



College sports polo shirt

College navy blue sports shorts

College sports socks and lace-up jogger

OPTIONAL



College sports track pants



College sports jacket



College full zip jacket



College cap (can be worn while playing sport)

MIDDLE & SENIOR SCHOOL

Years 7 - 12 Boys Sports Uniform



College wide brim hat for Middle and Senior School



College sports polo shirt

College navy blue sports shorts

College sports socks
lace up jogger

OPTIONAL



College sports track pants



College sports jacket



College full zip jacket



College cap
(can be worn while playing sport)

WHOLE SCHOOL

Sports House Years Prep - 12

Sport house shirts available at main reception.



Compulsory School Bags

School bags available at main reception.



Large



Small

Extracurricular Uniforms

Refer to page 2

WHOLE SCHOOL Shoes

****The Athlete's Foot Sugarland is our preferred shoe supplier. For every pair of shoes purchased, The Athlete's Foot will donate \$5 back to the College.**



ACCEPTABLE JUNIOR SCHOOL SHOES



UNACCEPTABLE JUNIOR SCHOOL SHOES



ACCEPTABLE MIDDLE & SENIOR SCHOOL SHOES



UNACCEPTABLE MIDDLE & SENIOR SCHOOL SHOES



- Note: Bright colours are not acceptable

WHOLE SCHOOL

Boys

ACCEPTABLE HAIR STYLES



UNACCEPTABLE HAIR STYLES



X Tracks or extreme hair styles



X Untidy or ungroomed



X No hair across face - eyebrows, ears & collar



X Rat tails



X Horsey hair or horsey plait



X Mullets



X Note: No mullet hair styles.
No all over shaved less than a 2 blade

WHOLE SCHOOL

Boys

ACCEPTABLE HAIR STYLES



- ✓ Hair is to be neat and tidy as determined by the College.
- ✓ Hair longer than the collar, eyes and eyebrows should be tied back.
- ✓ Hair accessories should be black, white, aqua or navy blue and functional for the purpose of holding the hair in place with NO adornments.
- ✓ Hair colour:
Prep – Year 9 boys' hair should be student's own natural hair colour.
Year 10 – 12 boys can have slight variation to student's own natural hair colour.
- ✓ Sideburns are to be no longer than the bottom of the ear.
All male students are to be clean-shaven.

UNACCEPTABLE HAIR STYLES



✗ Tracks or extreme hair styles



✗ Untidy or ungroomed



✗ No hair across face - eyebrows, ears & collar



✗ Rat tails



✗ Horsey hair



✗ Mullets



✗ Mullets

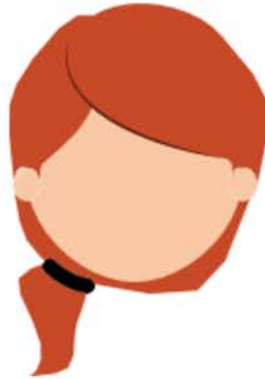
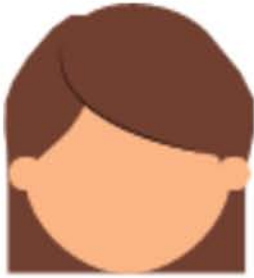


Note: No mullet hair styles.

Heads must not be shaved overall, less than a 2 blade

WHOLE SCHOOL Girls

ACCEPTABLE HAIR STYLES



UNACCEPTABLE HAIR STYLES



X Long hair untied
(hair below the collar
must be tied back)



X Untidy or
ungroomed



X Tight multiple braids or
with beads



X Colourful embellishments
(only plain black, navy blue, teal
or white)



Bundaberg Christian College
Education with Wisdom